



## 102 Elgin Crescent

Crownhill, Plymouth, PL5 3BX

**Guide Price £160,000**



GUIDE PRICE £160,000 - £170,000. An ex local authority semi-detached house believed to have been built in the 1950s & known as a Cornish unit. The property having been professionally upgraded in the past with bricked up lower elevations & PRC certification. A good-sized garden to the front & rear with potential to create off-street parking. The accommodation briefly comprises a spacious lounge, kitchen/dining room, downstairs bathroom, 3 bedrooms & separate wc. The property would benefit from updating. No onward chain.



ELGIN CRESCENT, CROWNHILL, PLYMOUTH, PL5 3BX

GUIDE PRICE £160,000 - £170,000

### LOCATION

Found in this popular mainly residential area with a number of local services & amenities found nearby.

### ACCOMMODATION

A door on the side opens to the hall giving access to the reception rooms & downstairs bathroom. A spacious front set lounge with picture window, open views & under-stairs storage cupboard. A kitchen/dining room with various storage facilities & 4 ring gas hob with electric under over. A cupboard housing the Gloworm gas fired boiler which services the central heating & hot water. Downstairs bathroom with bath & wash hand basin.

At first floor level a landing gives access to 3 bedrooms, 2 being large doubles. A separate wc.

Externally good-sized gardens to the front & rear with 2 storage sheds to the side. The front garden with potential to create off-street parking if desired & subject to any necessary approval.

### GROUND FLOOR

#### HALL

LOUNGE 17'11 x 9'10 maximum (5.46m x 3.00m maximum)

KITCHEN/DINING ROOM 11'11 x 11'5 maximum (3.63m x 3.48m maximum)

BATHROOM 5'8 x 4'8 maximum (1.73m x 1.42m maximum)

### FIRST FLOOR

#### LANDING

BEDROOM ONE 11'10 x 11'7 maximum (3.61m x 3.53m maximum)

BEDROOM TWO 12'1 x 10' (3.68m x 3.05m)

BEDROOM THREE 11'8 x 6'1 maximum (3.56m x 1.85m maximum)

WC 5'9 x 2'10 (1.75m x 0.86m)

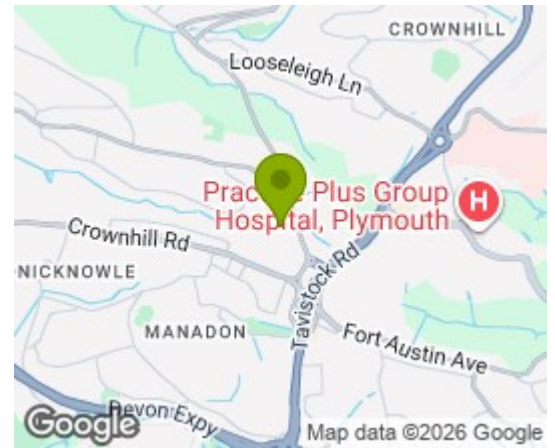
### COUNCIL TAX

Plymouth City Council  
Council Tax Band: A

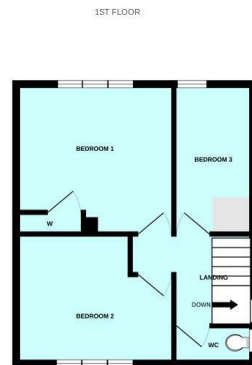
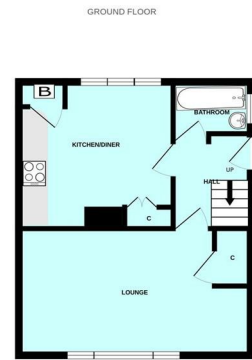
### SERVICES PLYMOUTH

The property is connected to all the mains services: gas, electricity, water and drainage.

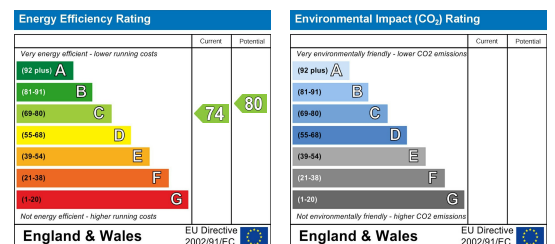
### Area Map



### Floor Plans



### Energy Efficiency Graph



These particulars, whilst believed to be accurate are set out as a general outline only for guidance and do not constitute any part of an offer or contract. Intending purchasers should not rely on them as statements of representation of fact, but must satisfy themselves by inspection or otherwise as to their accuracy. No person in this firm's employment has the authority to make or give any representation or warranty in respect of the property.